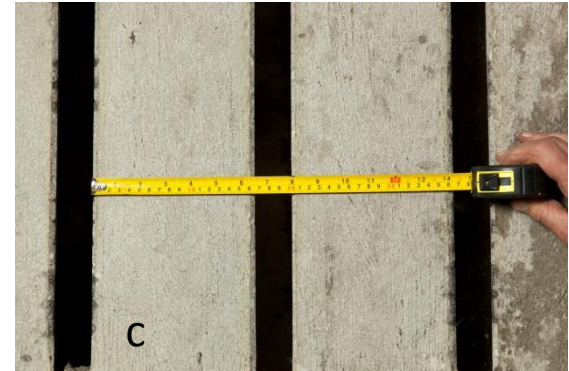




Guidelines for measuring & fitting EASYFIX Slat Rubber

How to measure the concrete slats



Step 1 – Measure the concrete slat

- Measure the width of the concrete slat-bar.
 - Measure the width of the gap/void between the concrete slat-bars.
 - Measure the total width of two slat-bars including the void area. For example the bar is $130 + 130 + 25 = 285$
- Repeat steps 1 on four different gangs of slat and take the average measurement.**

Step 2 - Measure the total slatted area

Calculate the total slatted area that you want to cover length x width (sqm).

Step 3 - Calculate the number of rubber pieces required

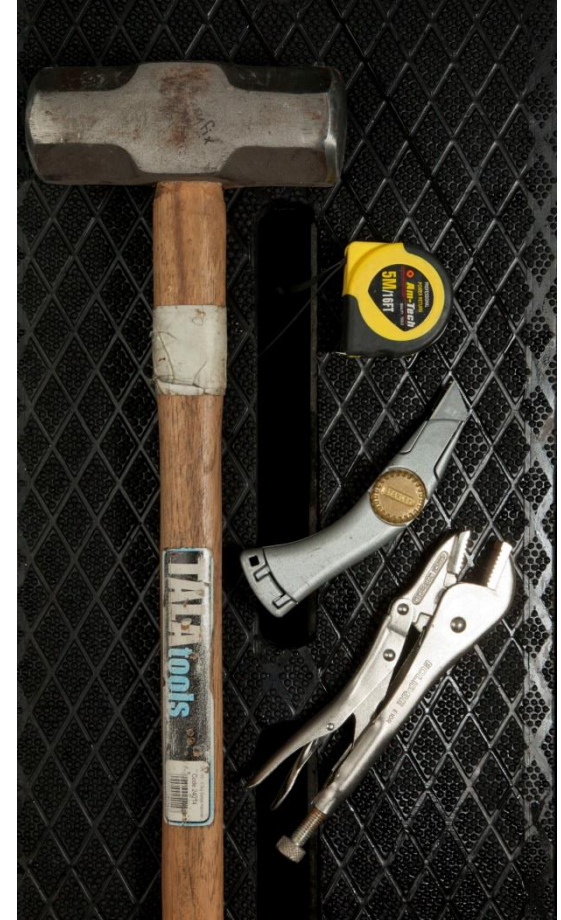
Example A: If the area has 20 slat bars which are 2m in length you will need 10 x 2m pieces of Easyfix Slat Rubber.

Example B: If the area has 20 slat bars which are 3m in length you will need 10 x 2m pieces and 10 x 1m pieces of Easyfix Slat Rubber.

Note: Please provide a sketch of the slats with all the measurements calculated to your EASYFIX Agent.

Tools required to install EASYFIX Slat Rubber

1. Measuring tape
2. A sharp knife
3. Vice grip / Pliers
4. Protective safety gloves
5. Heavy sledge hammer (12Kg)



1. Installation method – planning

1. Plan the setup and position of the pieces being fitted, to limit wastage.
2. Each slat/alley will have a different width and length. The dimensions of the slat/alley needs to be taken into consideration when installing, to avoid wastage.

Example: Slat/Alley width 2800mm

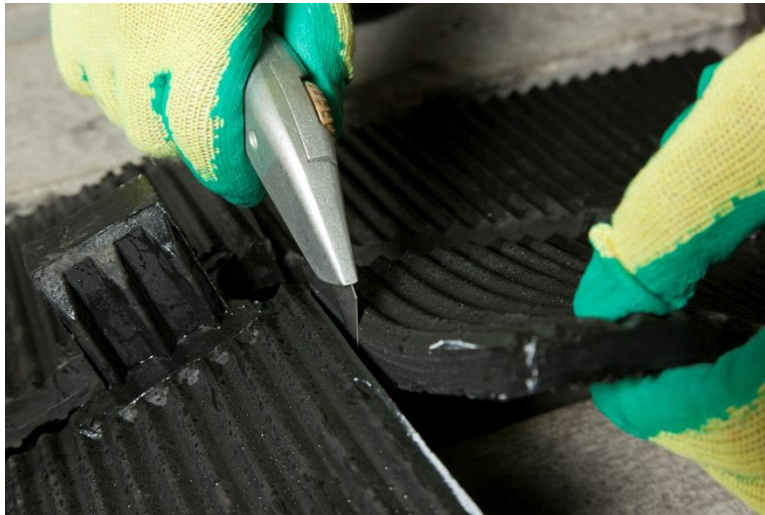
2000 mm	800mm
2000 mm	800mm
2000 mm	800mm
2000 mm	800mm
2000 mm	800mm
2000 mm	800mm

Attention!

- Short pieces should be placed in low traffic area and should have no **less than 2 wedges**.
- A small gap can be left where two mats join, to facilitate ease of fitting

2. Installation method – cutting slat rubber pieces

- A sharp knife is required to cut through the rubber piece.
- Lightly cut a straight line in the rubber with a knife.
- Bend the rubber and run the knife through the initial mark cut through the rubber.



Attention!

1. Always wear protective safety gloves during installation

3. Installation method – fitting the rubber slat pieces

- To ensure the slat rubber can be easily fitted, the concrete slats should be sprayed/covered with water.
- A sledge hammer must be used to insert the rubber wedge into the concrete void/gap.

Attention!

- If the wedge is too loose to fit the gap contact your supplier.



For further Information contact

EASYFIX

**Persse Business Park, Ballinasloe,
Co. Galway, Ireland, H53 VK10**

Tel: +353 (0)90 96 43344

Email: info@easyfix.ie

www.easyfix.ie