



## Neptune Mattress Installation Manual (English)



# Safety and Care Advice

Thank you for purchasing the EASYFIX™ Jupiter Mattress!

## Important

Please note the following safety instructions. EASYFIX™ is not liable for damages due to non-compliance.

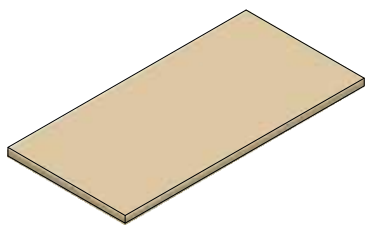
- Check you have all required components and fixings listed on page 2.
- Keep children and animals away from work area, small parts are a choking hazard.
- We recommend the use of power tools when screwing the fixings.
- If drilling is required, ensure there are no water pipes where you intend to drill.
- Dispose of packaging carefully and responsibly.



- EASYFIX recommends the use of bedding on top of the Jupiter Mattress for optimal animal comfort and welfare (e.g. Sawdust, Straw, Lime).
- It is recommended to fit the Jupiter Mattress from right to left.
- Matting is put in place first; holes are then drilled through the mat and concrete simultaneously.
- Scan the QR code for video instructions on assembly.



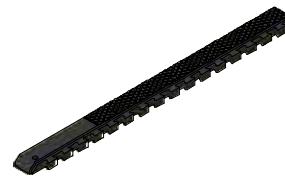
## Components



**1. Latex Foam**

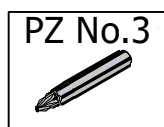


**2. Neptune Mattress**



**\*3. Neptune Spacer**

\*May or may not be applicable to your order.

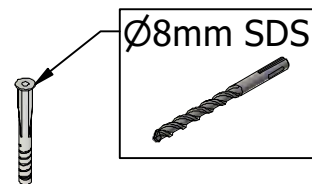


**A. 80mm  
SS Screw**

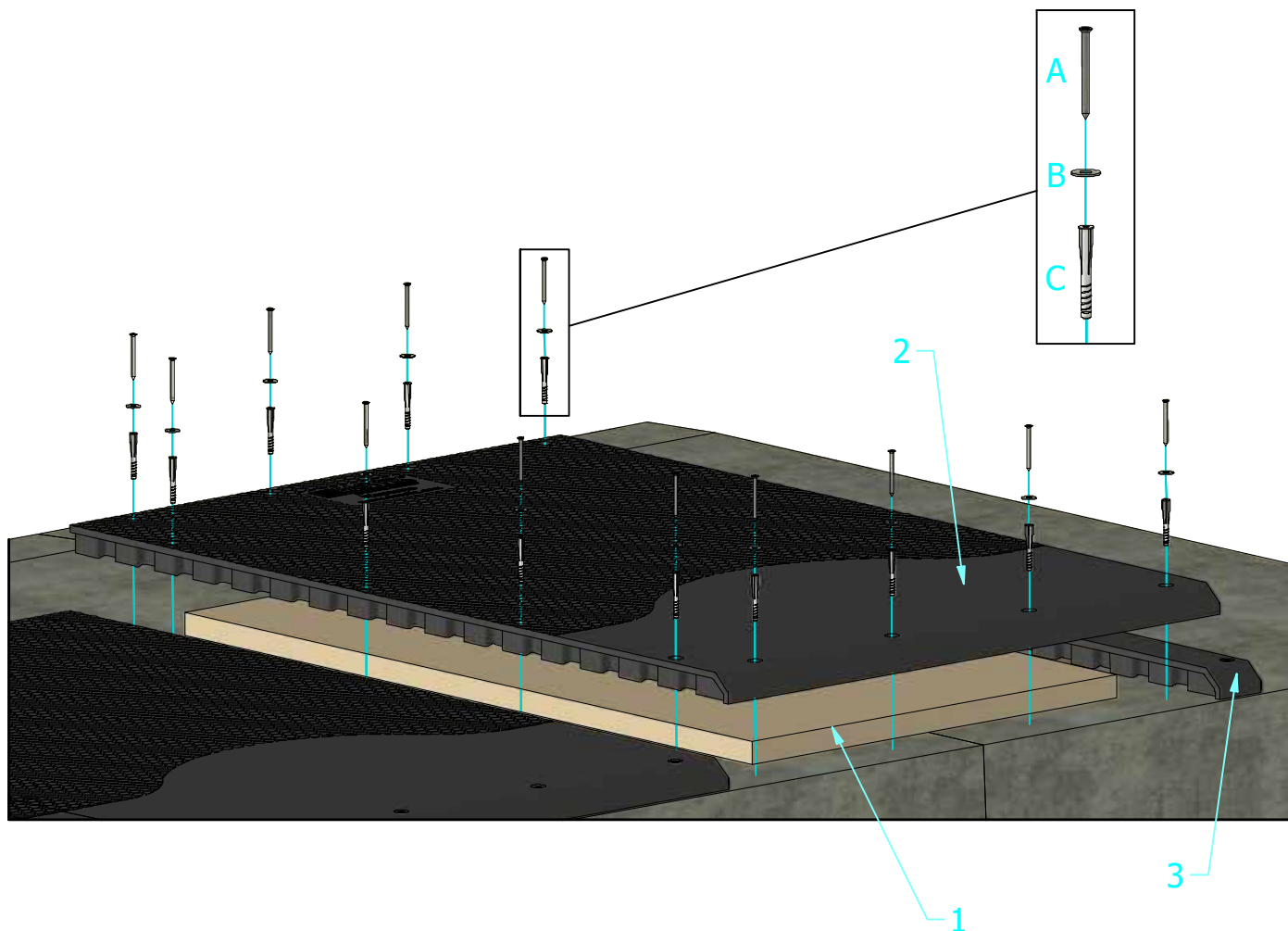
## Fixings



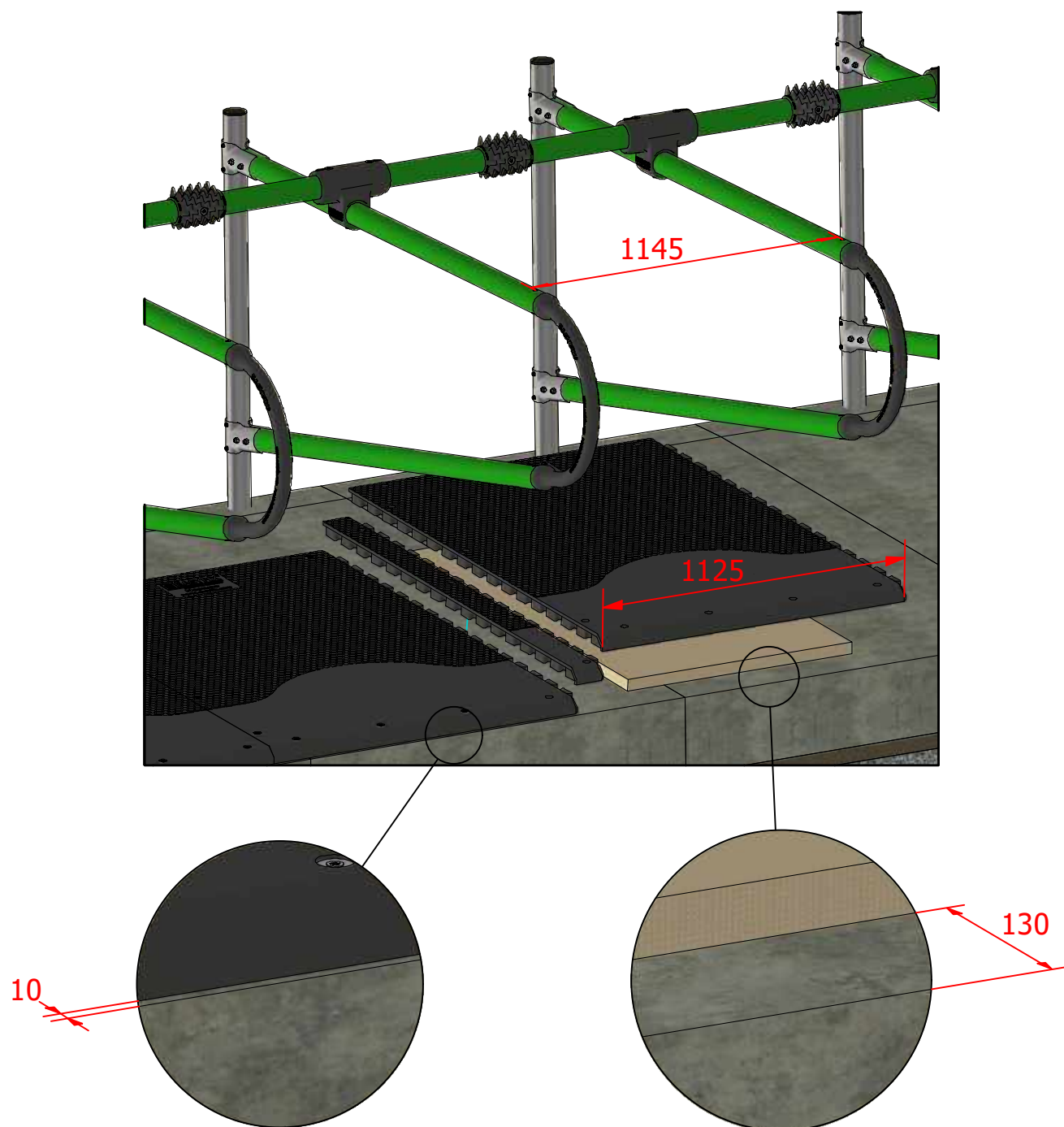
**B. 25mm  
Washer**



**C. Plug**



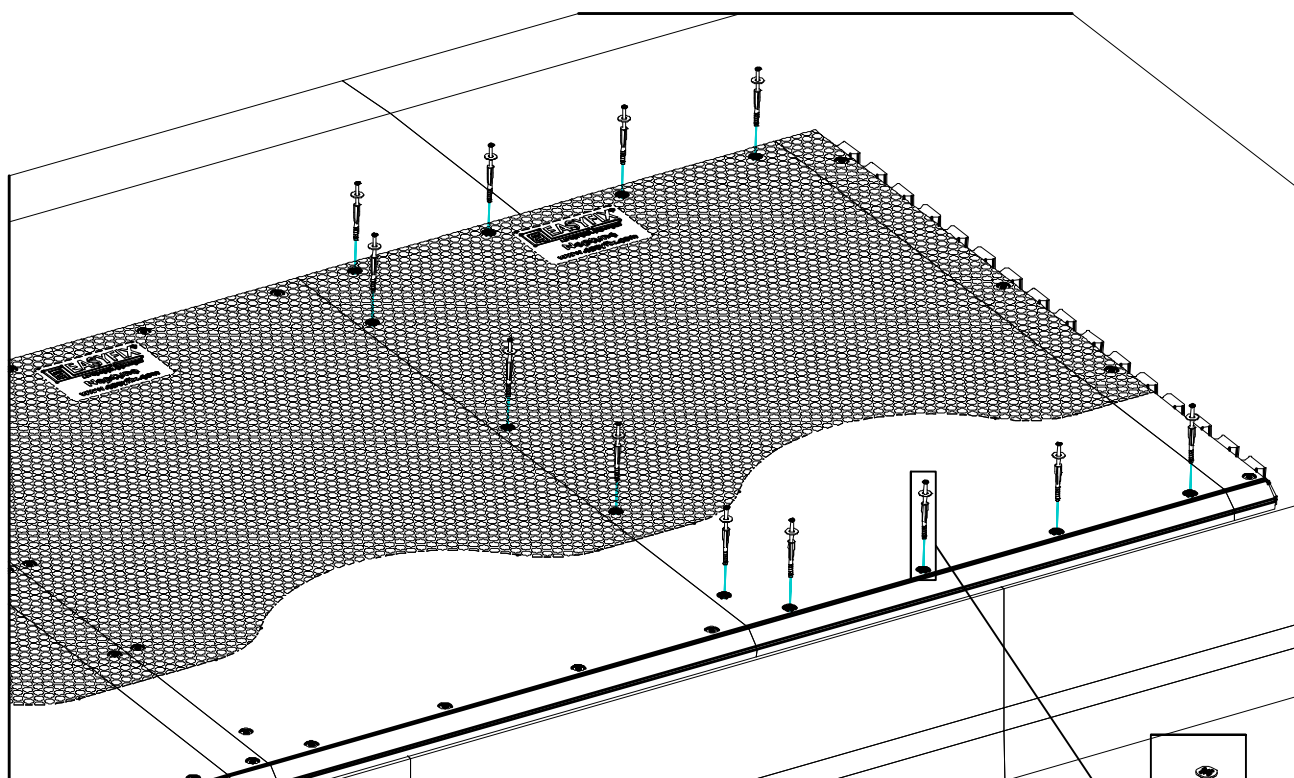
## Step 1 - Position the Mats



Cubicle Width	Spacer Ratio
~1220mm (48")	1:1
~1173mm (46 1/4")	1:2
~1145mm (45")	1:5
~1125mm (44 1/4")	No Spacer



## Step 2 - Fixing the Mattress



ID	Name	Neptune	Spacer
A	80mm SS Screw	12	4
B	25mm Washer	12	4
C	Plastic Plug	12	4

